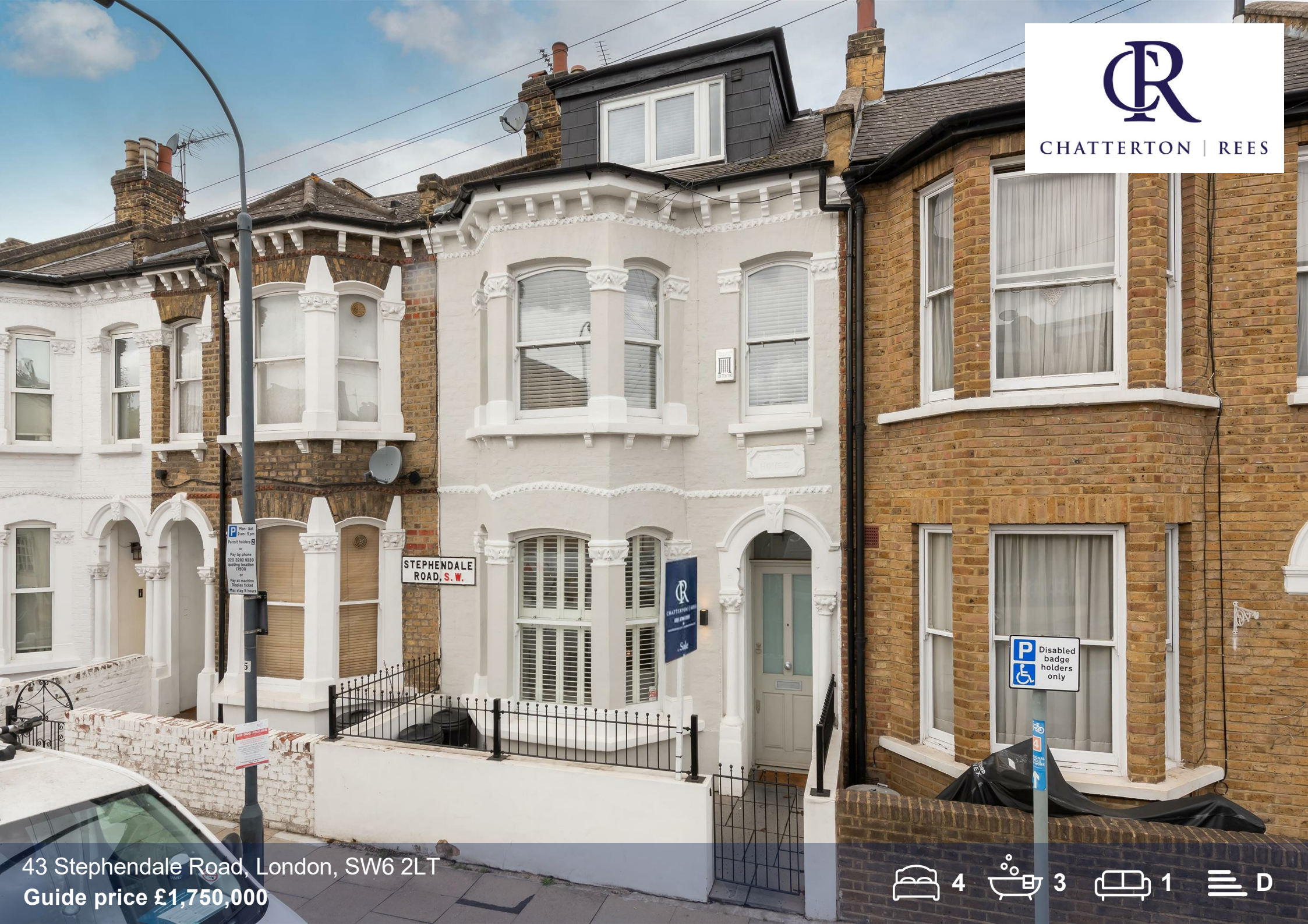




CHATTERTON | REES



P Mon - Sat  
8am - 5pm  
Permit holders  
or  
Pay by phone  
020 3292 9230  
waiting location,  
17009  
or  
Pay at machine  
Display ticket  
Please stay @ home

STEPHENDALE  
ROAD, S.W.



P Disabled  
badge  
holders  
only

43 Stephendale Road, London, SW6 2LT  
Guide price £1,750,000





# 43 Stephendale Road

London, SW6 2LT

- Stunning Victorian House
- Four Bedrooms
- Open-Plan Living
- 42sqft West Facing Garden
- Three Bathrooms
- Close to River Thames

In excess of 2000sqft - This stunning four bedroom house provides generous and unique living space fitted to a high-specification, while also offering highly efficient accommodation complete with solar panels and a 42' garden.

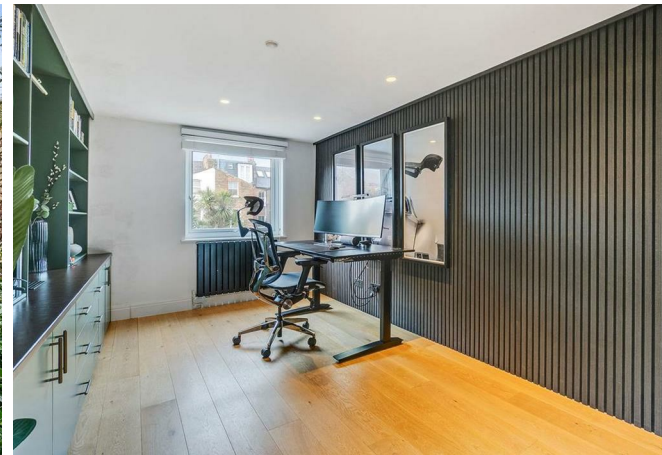
Space and light are prominent throughout the house, with every room being larger than normal. Similarly, the style is a result of tasteful choices made by the vendors along with their interior designers. Practical issues have been taken into account for a busy family.

The ground floor features a lovely reception to the front, flowing through to a kitchen diner. This leads out to the large garden through bi-fold doors, where the garden is private and secure, but long enough to enjoy sun all day long. The ground floor also boasts a convenient WC.

On the first floor the master bedroom has a walk-in wardrobe and ensuite and there is another large double bedroom at the rear of the property. While upstairs there are two further large doubles one of which is serviced by an en suite and a further modern and well-proportioned family bathroom

Placed on the ever-popular Stephendale Road, the property is larger than most on the street with one of the larger gardens for the area. Within easy walking distance to Wandsworth town, Parsons Green, and Imperial Wharf stations. Conveniently located for the shops, bars, and restaurants of Wandsworth Bridge Road as well as the nearby Sainsbury's superstore.

Guide price £1,750,000





## Directions





